

Celiveo[®] 8 – January 2022 Release 22A

Release Notes for HP Printers Embedded Agent

Version: 8.9.022.0128 / 8.9.122.0128

© Copyright 2022 Celiveo Pte Ltd



Copyright Information

©2011 – 2022 Jetmobile Pte Ltd. All rights reserved.

Parts under license from JetCAPS International Business Strategy SAS

Protected by US patent number: 6,889,252

Protected by Singapore patent number: 104066

Protected by Australian patent number: 2002350998

Reproduction, adaptation, or translation without prior written permission is prohibited except as allowed under the copyright laws. The information contained herein is subject to change without notice.

The only warranties for Celiveo products and services are set forth in the express warranty statements accompanying such products and services. Nothing herein should be construed as constituting an additional warranty. Jetmobile Pte Ltd and Celiveo Pte Ltd shall not be liable for technical or editorial errors or omissions contained herein.

Device and printer interfaces use technology developed by Jetmobile Pte Ltd and technology under license from HP Inc. Jetmobile Pte Ltd and our licensors control all intellectual property and copyrights in this product.

Trademark Credits:

Celiveo is a registered trademark of Jetmobile Pte Ltd.

All other marks are the property of their respective owners.

Revision – 01/2022

Table of Contents

Copyright Information	1
Table of Contents.....	2
Version History	3
Release Versions	13
Requirements for Printers.....	13
Supported Printers.....	14
Known Defects and Limitations.....	15

Version History

Date: 31st January 2022	
HP Printer Embedded Agent (8.9.022.0128 / 8.9.122.0128)	
Changes and Fixes	
23748	Resolved condition that prevented from displaying a warning message in case SQL database is not reachable by the printer.
Date: 24th November 2021	
HP Printer Embedded Agent (8.9.021.1118 / 8.9.121.1118)	
Changes and Fixes	
19233	Download of 5 AD Attribute and NetBiosName if Full cache is enabled.
21583	Support of the Dual Credentials feature when daily scheduler is ON.
21313	Support of auto purge and report policy in the database in case of incorrect SQL queries or if data is corrupted.
21825	Support of Dynamic IP Address Change on printers.
22837	Support of automatic conversion of a print job file so that it can be released on a different printer brand from the original driver (UniDriver Support).
19834	Resolved condition that prevented from denying the job release if the user's quota limit is reached.
16162	Resolved condition that prevented from scrolling when the job list has 7 or more jobs.
19592	Resolved printer synchronization error with Russian language, without a Proximity reader attached with High Availability enabled.
22407	Resolved printer synchronization error when a user is expired in High Availability and authenticates on a device.
22473	Resolved condition that prevented from displaying the appropriate user details in TGS Reports.
22968	Resolved User Authentication failure in case of inappropriate masking of the ID.
22735	Resolved condition that prevented from updating the last activity time in cache which leads to enrollment failure.
Date: 25th May 2021	
HP Printer Embedded Agent (8.8.021.0521 / 8.8.121.0521)	
Changes and Fixes	
#21469	Support For CVOID2 for Print Rules
#21845	Resolved condition of job print where the job include includes some special characters.
#21690	Improvement the message displayed when Database storage is not reachable.
Date: 10th May 2021	
HP Printer Embedded Agent (8.8.021.0510)	
Changes and Fixes	
#21305	Resolved condition for ID code authentication in case of failover to secondary database.
#21558	Printer is able to sync even the Primary and Secondary AD credentials are invalid
#15412	Support for HP Modern Devices in Celiveo 8
#21560	"LDAP bind failed with user" in logs shows the value of the valid username
#21489	Support for Printer Agent Metadata
#18763	Message Improvement when CVP isn't available
#18754	Support for Dual Credential System for all Credential-Based Features

#21212	LFP: use can't auth if reboot printer and CSA together
#20875	Implemented Duplex printing rules
#20560	Not able to sync device if we use hostname instead of IP inside AD/LDAP Profile
#20903	Resolved condition to display correct MAC address on printer panel
Date: 1st April 2021	
HP Printer Embedded Agent (8.8.021.0317.EXPIRES.JAN.2022)	
Changes and Fixes	
#21002	Resolved condition that prevented the "FS ALL Embedded" function from controlling Access Control on HP FS 4 and FS5 Classic devices.
#21137	Resolved condition that caused the Celiveo Initialization to fail on Konica Minolta, Xerox and HP FS 4 devices.
#19528	Resolved condition that prevented dynamic quota balance from being updated with the copy count on the printer panel.
#18574	License is now automatically checked and updated before it expires.
#20728	Resolved condition that caused documents sent through CVP to get stuck in queue.
#19835	Resolved condition that caused color job print not to be allowed as mono job with a sufficient mono quota.
#18981	Resolved condition that required to authenticate twice on the printer.
Date: 20th January 2021	
HP Printer Embedded Agent (8.8.021.0118)	
Changes and Fixes	
#19137	Resolved condition that prevented Track-EM from working when Print Direct is not available with the main license.
#20268	Resolved condition that prevented High Availability from working if the job was generated with a Job User ID equal to UPN/Email/Domain.
#18472	Removed unnecessary pop-up for credentials when an authenticated user with Celiveo Kerberos uses Scan to Folder.
#19675	Resolved condition that prevented user quota from being deducted for job printing with High Availability enabled and database down.
#19552	Resolved condition that prevented tracking from functioning for HP OXDP Pro printers.
#19694	Resolved inconsistency in NetBiosPlusLoginName and UserPrincipalName with High Availability enabled and user name includes a single quote.
#19727	Updated copyright for the year 2021
#19825	Resolved condition that prevented the display of a currency sign in Jobs List when using value quota and no pending job.
#20039	Added Copyright text in Czech language.
#17138	Resolved condition that prevented toner saving mode from being populated with jobs received from LFLIST.
Date: 11th December 2020	
HP Printer Embedded Agent (8.8.020.1207)	
Changes and Fixes	
#18312	Enroll Me Button is Displayed by Mistake
#18719	Showing connected server name on Print Job List to user
#19030	Added the user AD attribute under tracking information when user authenticate on the printer.
Date: 13 November 2020	
HP Printer Embedded Agent (8.8.020.1106)	
Changes and Fixes	

#18137	Support of configurable ports (static ports).
#17999	Report blank page as a Mono Page to align the tracking count.
#18302	Resolved condition that caused an error when synchronizing with Kerberos Profile settings.
#15278	Enhancement of Print Rules based on Quota.
#18655	Resolved condition that caused Push Print PrintedDate to display incorrectly.
#18556	Resolved condition that prevented jobs from displaying on My Print Jobs when generated by using [domain]sAMAccountName.
#12998	Resolved condition that caused Printer to incorrectly display username with the '&' character as ASCII hex character \x26 on the My Print Jobs section on the printer panel.
#17353	UI Improvement for Printing Job screen.
#17083	Resolved tracking defect for Email which was tracked as "UNKNOWN" for Pull Print and Print-Direct with solution.
#18974	Resolved incorrect tracking info (DomainName, Email, department) on pull print jobs with multi-domains.
#16541 #15031	UI improvements to display the correct decimal value for the not enough balance warning message and balance screen.
#19200 #19006	Resolved condition that caused the solution to crash when using Split Quota.
#17618	Support of Multi-domains.
#19375	Resolved condition that caused Kerberos Setup to be unable to authenticate user.
#19643	Resolved condition that prevented the user from authenticating when High Availability is enabled.
#19514 #18746	UI improvements for localization for Sprint Count out of balance.
Date: 28 September 2020	
HP Printer Embedded Agent (8.8.020.0928)	
Changes and Fixes	
#18737	Resolved condition that caused a loss of tracking data as the solution was not registered at printer boot time.
Date: 05 August 2020	
HP Printer Embedded Agent (8.8.020.0801)	
Changes and Fixes	
#17886	Resolved condition that prevented the alphanumeric ID codes from functioning.
#17953	Resolved condition that a revoked smartcard shall not be authenticated successful.
#7299	Resolved condition that prevented System logs from being enabled for Smartcards.
#15934	Implementation of HP Embedded Tracking with Print Direct.
#16139	Resolved condition that prevented expired Push Print jobs from being deleted.
Date: 13 July 2020	
HP Printer Embedded Agent (8.8.020.0709)	
Changes and Fixes	
#16959 #15422	Implementation of Authentication with an Alphanumeric code in addition to card and Login/Password.
#16961	Implementation of Print Queue Rights based on print rules.
#16964	Implementation of Smartcard CRL Validation.
#16042	ELATEC Card Reader PID/VID Support.

#16474	OXPd Custom Authentication / Authorization with Access Control Rules for Existing Features.
#4909	Implementation of Multi-Domain Login and Password Support.
#12417	There is no "fail-over" to the primary DB if the secondary isn't available.
#17058	Resolved condition that caused the Printer to reboot after trying to delete one Pull Print job.
#17062	Resolved condition that prevented users to authenticate into a second domain.
#16877	Resolved condition that prevented users to log in with an Alphanumeric code using an SQL Access profile.
#17650	Enhancement for the criteria in "Driver + Settings" with using operator "Is Not" for Deny printing.
Date: 19 May 2020	
HP Printer Embedded Agent (8.7.020.0505)	
Changes and Fixes	
#14801	Implementation of dynamic ports support for ZeroConfig.
#15029	Improvement of logs confidentiality.
#13799	ZeroConfig bootstrap improvements.
#12872	Implementation of local job listing instead of connecting to SQL DB to improve the request response time.
#15001	
#15652	Resolved localization defects for Russian and Traditional Chinese.
#15511	Resolved defect that caused the display of an error message after setting Toner Saving Discount.
#15353	Displayed 'Printer Agent' in the source column on Web Admin Printers list.
#14761	Resolved synchronization failure defect when upgrade printer agent.
#7897	Resolved Push Print- Job selection/Job count defect.
#15651	Resolved defect that caused changes on the Printer UI not to be reflected.
#15800	Fixed display error on the Printer UI which ID:: shall display only one colon.
#15578	Implementation of the ability to authenticate and authorize any 3rd party application
#14991	GUI set via the Custom Authentication XML file.
#15273	Compatibility for 8.7 Printer Agent with 8.6 Web Admin to solve tracking issue.
#15321	Resolved Job listing issue with HA when SQL server is down.
#15979	Resolved defect that caused the Access Control settings on the Printer EWS to be locked.
# 16134	Job listing performance improvement when HA is enabled and AD/SQL down.
Date: 16 March 2020	
HP Printer Embedded Agent (8.7.020.0313)	
Changes and Fixes	
#14815	Support Multiple LDAP profile with same AD server.
Date: 21 February 2020	
HP Printer Embedded Agent (8.7.020.2021)	
Changes and Fixes	
#13442	Implementation of using Alternative Login Authentication method (e.g. login/password) when the card reader is not connected.
#13493	Fixed a condition where the authentication was impossible after a series of very quick insert/remove occurrences of PKI smartcards in the PKI smartcard reader.
#14424	On the printer UI, "Enroll me" button has been moved to the right of the "My print jobs" button.

#14631	On the printer UI, fixed a condition in the pull print jobs list where the "Select/Unselect All" button did not work properly.
#14642	Improvement on Job Listing time on My Print Jobs when logs are enabled.
Date: 13 February 2020	
HP Printer Embedded Agent (8.6.020.0213)	
Changes and Fixes	
#14503	Resolved defect that caused an Error 49 while using ID to Print All with Smartcard.
Date: 17 January 2020	
HP Printer Embedded Agent (8.6.020.0114)	
Changes and Fixes	
#13349	Resolved defect that caused a job accounting service error.
#13611	Resolved defect that caused enrollment to fail when Dual Factor was enabled.
#13843	Resolved defect that prevented BLE mobile authentication to work properly.
Date: 09 December 2019	
HP Printer Embedded Agent (8.6.019.1209)	
Changes and Fixes	
#13301	Resolved defect that caused the Access Control settings on the Printer EWS to be locked.
#13663	Resolved defect that caused SQL Server High CPU usage.
Date: 26 November 2019	
HP Printer Embedded Agent (8.6.019.1128)	
Changes and Fixes	
#11799 #12911	Implementation of Custom OXPd Authorization Proxy.
#13187	Resolved defect that prevented the error message to display when there was an error during the enrolment of a new user.
#13074	Resolved defect that caused wrong information to be displayed in the database for the Scan to Folder function.
Date: 06 November 2019	
HP Printer Embedded Agent (8.6.019.1105)	
Changes and Fixes	
#6278	Improvement of the SmartCard authentication feature.
#11396	Resolved defect that prevented enrollment or authentication when the printer is synchronized with LDAP over SSL. Please see configuration instructions on the Celiveo Portal .
#11800 #12732	Resolved UI menu misleading name.
#13176	Resolved Spanish Localization defect.
#12959	Resolved defect that prevented tracking data to be updated with groups and OUs details.
Date: 18 October 2019	
HP Printer Embedded Agent (8.6.019.1016)	
Changes and Fixes	
#12936	Resolved wrong error message in Spanish when a user entered an incorrect username or password.
#12926	Resolved defect that prevented authentication when a user had 1000 AD groups.

#12841	Resolved defect that prevented enrollment for users who had an apostrophe in their name.
Date: 18 September 2019	
HP Printer Embedded Agent (8.6.019.0917)	
Changes and Fixes	
#6939	Implementation of cost profiles from the new Reporting tool.
#9604 #11034 #11577	In-house verifications on HP printer firmware upgrades. (for firmware 4.8 and above)
#8849	Resolved defect that caused Tracking files to be deleted from the embedded agent after a power cycle event.
#10950	Resolved defect that prevented Web Admin System logs to be generated when the user interface language at the printer is changed.
#11473	Resolved defect where wrong balance information is displayed for pending pull print jobs in printer display screen.
#11469 #11280	Resolved defects that caused the display of wrong balance information for new user in the printer display screen.
#11305	Resolved defect where printer turns unresponsive while trying to synchronize with Agent. Error 49.38.13 is now not shown at the printer.
#11746	A user releasing print jobs from one or more CVP workstations is now able to release all print jobs successfully, if both workstations are accessible. If any of the workstations are non-accessible, then appropriate error messages are generated in Web Admin System logs and warning messages are displayed at the printer.
#12035	Improvements in 'total impression' value to reflect the number of pages printed in the TGS 10 report.
#11395	Existing enrolled users are now able to authenticate at the printer using Smartcard/ Proximity card when backend is offline.
#12328	Resolved localization defect when printer UI language is changed to Spanish.
#11996	Resolved defect where printer information was not correctly tracked in TGS 10 reports for deleted print jobs.
#11947	Resolved defect that made Web Admin System logs create a corrupted excel file while exporting.
#12460	Resolved defect that caused failure in releasing print jobs when backend is offline and High Availability is enabled.
Date: 03 September 2019	
HP Printer Embedded Agent (8.6.019.0903)	
Changes and Fixes	
#12178	Resolved defect that caused the user name to be replicated in the User Display Name, Department and Email fields in the tracking data.
#12070	Resolved defect that caused a printer attached to a secondary SQL server to store its tracking data on that secondary server instead of the primary server.
#12068	Resolved defect that caused HP Printer Embedded Agent to crash randomly.
#12111	Resolved defect that caused inconsistency in tracking records created in TGS 10.
#11970	Resolved defect that did not allow the Agent to read 56-bit long (17 digit numeric value) IDs used in Badge/ Cards.
Date: 23 August 2019	
HP Printer Embedded Agent (8.6.019.0821)	
Changes and Fixes	

#11902	If the Currency type is updated in Cost Definition profile and printer is synchronized, the updated currency type is now reflected in TGS 10 tracking reports, when performing Pull print event.
#11901	If the Currency type is updated in Cost Definition profile and printer is synchronized, the updated currency type is now reflected in TGS 10 tracking reports, when performing Direct IP Printing event.
#11896	Resolved missing tracking information defect in TGS report when performing Direct IP printing.
#11885	Tag values in the TGS reports now reflect the same values as those set in Printer.
Date: 14 August 2019	
HP Printer Embedded Agent (8.6.019.0730)	
Changes and Fixes	
#8752	Improvements on SQL support as part of AAG setup.
#9036	Support AlwaysOn Availability Group (AAG) feature for mono-region and multi-region (multi-subnet) environment.
#6210	Support for Motorola Readers.
#6361	Support Signature for HP embedded agent as part of HP Security standards.
#6047	Support Gemalto MD, Java 23K and Java 64K smart cards.
#7111 #6499	Certificate expiry validation for Smart cards.
#11114	Support for the new Celiveo USB reader capable of reading both contactless cards and SafeTrust BLE smartphone IDs.
#6035 #5410	Validation of Stealth mode feature on HP embedded agent.
#6364	Guest users now have the option to perform Copy/ Email/ Print without the need to identify themselves (enroll/ authenticate) at HP FutureSmart printers.
#7644	Support Dynamic ports for SQL Server connection.
#7319	Support Encrypted connection to SQL Server.
	Control panel activities such as Service Menu, Settings are not locked by Celiveo solution by default. This is applicable to HP FutureSmart printers only.
#6737	Enhancements to support dual tracking
#11278	Resolved defect where error 49.38.13 is seen at the printer when user tries to authenticate after a printer synchronization. User is now able to synchronize, boot and authenticate using smartcard, with/ without High availability enabled.
#11367 #11372	Resolved defect where error 49.38.14 /49.38.0C is seen at the printer upon user authentication when backend is Offline and High Availability is enabled.
#11474	User is now able to authenticate using Badge/ Smartcard, without having to press "My Print jobs" at the printer.
#9729	Resolved defect that caused the display of a wrong number of printed pages on HP Page Wide 586 printers.
#10438	Tracking and cost information is correctly displayed in TGS report for TGS 8 and TGS 10 when user performs a Pull print job at the printer.
#10400	Resolved defect of user authentication failure at the printer when username contains special characters.
#11077	Resolved typographical errors and improved UI for TGS 10 reports.
#8859	Resolved defect so that System log time is equal to local time.
#9918	Resolved defect that prevented Printer synchronization with a different version of the Firmware.

#9690	Resolved defect that caused an Authentication error when High Availability is enabled.
#9416	Resolved defect that caused a long delay before jobs are printed.
#9027	Resolved User authentication defect at the printer after a downgrade from a higher version of HP embedded agent.
#9400	Resolved defect that caused an error on HP 785 printers after synchronizing on an "AlwaysOn" VM, then synchronizing on a Non-"AlwaysOn" VM.
#6685	Resolved occurrence of synchronization failure error when user configures the buttons to be displayed in printer panel of HP FutureSmart printers (using User Interface option in Web Admin) and synchronizes the printer.
#6560	The version of HP embedded agent available on FutureSmart printers is also now listed in the Web Admin Printer list page (after synchronization), in addition to CSA agent-based printers.
#6722	Improvements on listing print job information in the printer device screen.
#6066	The email-address of the user, authenticating at the HP FutureSmart printer, will now be pre-populated in the appropriate fields when performing Scan to Email from the printer.
#4092	Resolved defect that prevented the download of 10k users from Active Directory to HP FutureSmart Printers.
#7896	Resolved defect that displayed an error message after job printing or deletion.
#8356	Resolved LDAP Service account rights defect that caused Authentication failure.
#4789	Resolved synchronization defect observed in HP FutureSmart printers in a TLS 1.2 protocol enabled environment.
#6003	Resolved tracking incorrect information in Tracking reports, when performing Direct IP printing.
#8016	Resolved defect that made printers crash after downgrading the HP embedded agent version.
#8978	Resolved defect where user was unable to perform Digital Send/ Scan to Email event at the printer when using Office 365 account.
#10438	Tracking and cost information is correctly displayed in TGS report when user performs Pull print job at the printer.
#10912	User enrollment to AD can be performed successfully irrespective of large OU/Group. Note: User access rights may not get applied when there are special characters such as (&,<,>,"') in the name defined for Organizational Unit (OU).
Date: 15 July 2019	
HP Embedded Agent (8.5.019.0712)	
Changes and Fixes	
#10192	Resolved defect for missing tracking information in TGS report when compared to Printer activity logs.
#10912	User enrollment to AD can be performed successfully irrespective of large OU/Group. Note: User access rights may not get applied when there are special characters such as (&,<,>,"') in the name defined for Organizational Unit (OU).
Date: 08 May 2019	
HP Embedded Agent (8.5.019.0318)	
Changes and Fixes	
#6716	Resolved defect of tracking information (printing/email/fax) missing in the TGS reports for HP FutureSmart printers.
Date: 20 February 2019	
HP Embedded Agent (8.5.019.0221)	

Changes and Fixes	
#7067	Improvements on handling SQL injection vulnerability, when adding apostrophe.
#6637	Rapid tapping (continuous login/logout) on the HID Rev E proximity card reader using an enrolled card, now does not display "Invalid ID" error message on the Konica Minolta printers.
#6697	By configuring Without Job List or ID to Print options in Web Admin, user is able to release all print jobs when authenticated with Smartcard on HP Future Smart 3 printers.
Date: 24 January 2019	
HP Embedded Agent (8.5.019.0123)	
Changes and Fixes	
#6361	Support Signature for Embedded agent as part of HP Security standards.
#6590	Resolved defect of Smartcard authentication with High Availability, displaying previously authenticated user's details, when another user authenticates at the printer.
Date: 08 January 2019	
HP Embedded Agent (8.5.019.0108)	
Changes and Fixes	
#254	Support for Personal Identity Verification (PIV) Smartcards.
#5526	Error logs implementation improvements.
#5031	Resolved defect of displaying incorrect Celiveo version details on the Web Admin, when an upgrade to newer version was performed successfully.
#6003	Resolved defect of displaying duplicate print records in TGS report, when print jobs are printed using Direct IP printing (Print Direct).
#5497	Printer UI improvements.
Date: 21 December 2018	
HP Embedded Agent (8.5.018.1221)	
Changes and Fixes	
#6103	Increased CSS Response Timeout to avoid D14 message during Job Listing (in High-Availability mode).
#6054	Improvements in Job Listing and Job Release.
Date: 20 December 2018	
HP Embedded Agent (8.5.018.1210)	
Changes and Fixes	
#5996	Removed Failover when CSS Client IP is unreachable.
Date: 05 December 2018	
HP Embedded Agent (8.5.018.1128)	
Changes and Fixes	
#3779	Resolved defect of not being able to track print records on TGS report for 'Instant Print Release (ID to Print)' with High Availability configuration when AD/SQL server is inaccessible on HP printers.
#4908	Resolved Self-Enrollment with PIN code defect.
#3422	Printer device UI improvements (for HP).
#4356	Celiveo solution configuration improvements.
#1086	Resolved defect of displaying invalid values in the Copies field on the Printer UI, in HP printers.

#3985	Printer device UI improvements for HP printer - certain icons are locked for use even after authentication.
#4279	Resolved synchronization failure on HP printer with PIN authentication enabled.
#3740	Resolved defect of wrongly tracking information (Printers, Submitted, Color Pages, Cost, and File Size) on TGS report with 'Instant Print Release (ID to Print)' configuration on HP printers.
#4285	Resolved incorrect message displayed on HP printers when user tries to set card password during user enrollment.
#3672	Printer device UI improvements (for HP).
#4812	When self-enrollment is disabled, card and ID/ password authentication is successful for users available in Active Directory.
#4828	Resolved wrong tracking information defect on TGS report for 'Scan to Email' print jobs, on HP printers.

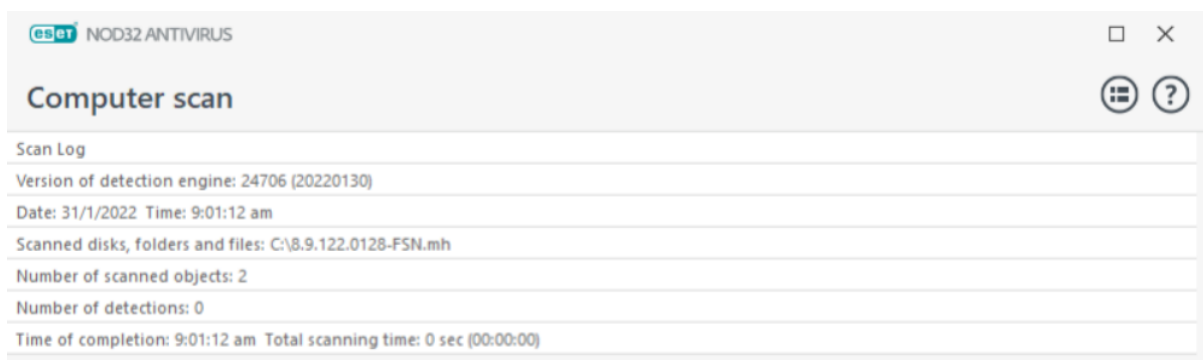
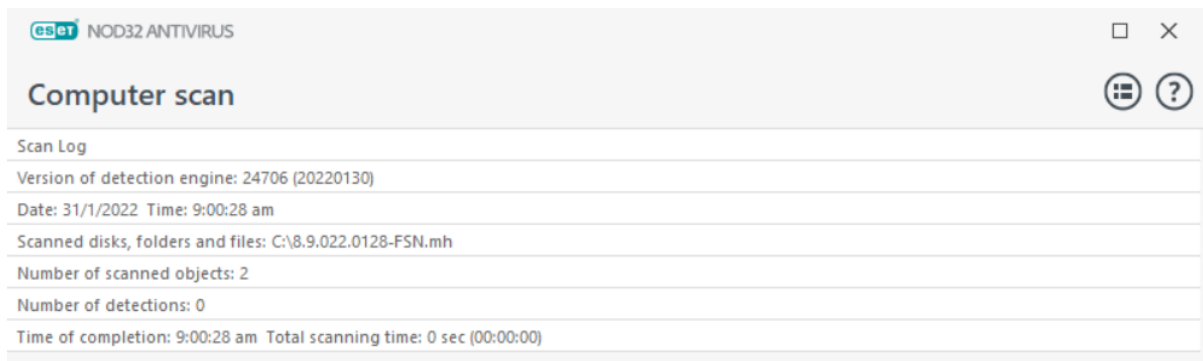
Release Versions

This release supports the following packages.

Software/Firmware	Version
HP Embedded Agent	8.9.022.0128 (it is recommended to use HP Firmware version from 4.8.0.1 to 4.11.0.1 – Avoid the version of 4.9.0.1. More details on https://manual.celiveo.com/currentrelease/en/topic/hp).

Product Safety Testing

Celiveo 8 solution for HP Printers Embedded Agent has come out clean and free of any virus while performing Antivirus scan using NOD32 ANTIVIRUS v14.0.22.0, with the detection engine 23059 (20210401).



Requirements for Printers

Refer to the respective Celiveo Administrator's guide for the manufacturer.

You can also visit the [Celiveo manual](#) to get information on printer configurations for Celiveo solution installation.

Supported Printers

Please see our [website](#) to access the full list of HP Supported models.

Known Defects and Limitations

The following are known defects.

(Ref) No.	Description
14715	Defect: When logs are enabled and user has 1000 groups, it takes up to 40 seconds for Badge/PIN authentication with enroll to SQL

The following are the known limitation.

(Ref) No.	Description
4692	Limitation: Printer without build in keypad will need to equip with Cherry keypad. It takes longer time to authenticate at the printer when authenticating (PIN) via Cherry keypad.
5745	Limitation: Elatec Reader is not supported in HP embedded agent printer devices (HP FutureSmart).
6005	Limitation: This is a limitation on Printer. HP Pagemwide Pro printers can only release maximum of 50 pull print jobs at a time, even when user quota (Quota per user/Department (Jobs)) settings in Web Admin is configured to be above 50.
10576	Limitation: This is a limitation on Firmware. Improvements to be made when configuring embedded agent in the printer using Windows domain account and access to Embedded Web Server (EWS).
11330	Limitation: This is a limitation on OXPD. User may not be able to edit settings in Access control panel being locked by Celiveo Authorization Service.
11369	Limitation: The total cost for Pending jobs shown at the printer panel is not precise to the exact decimal points as displayed for each print job.